

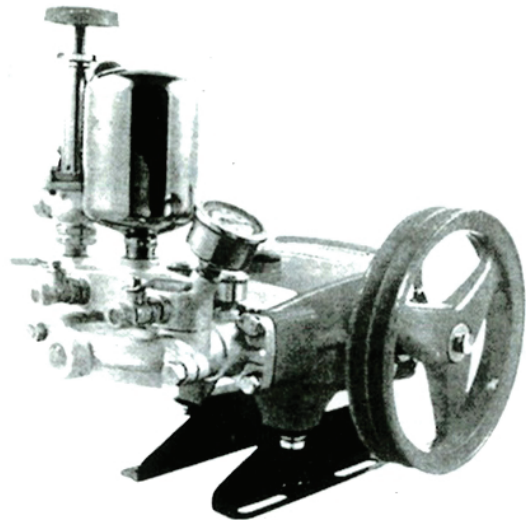


# POWER TILLER POWER SPRAYER

## MODEL PS30 Horizontal Plunger Pump

## PARTS LIST

Attachment Operating  
Instruction and Trouble Removal



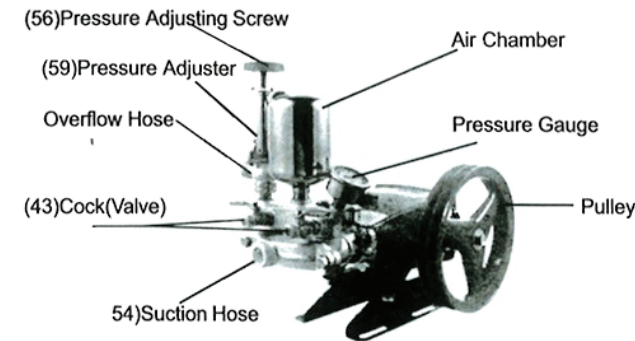
1. PRODUCTS ARE TOTALLY UNIFORMED IN SIZE IN ACCORDANCE WITH SPECIFIC REQUIREMENT
2. PROFESSIONAL TREATED MATERIALS FOR LONGE DURABILITY, COMPACT DESIGN FOR EASY CARRYING
3. VARIOUS DESIGNED ACCESSORIES(1.E., SPRAY GUN, NOZZLE, JOINT ... ), SUIT FOR DIFFERENT PLENTS OR CLEANING JOBS.
4. COMPACT AND FASHION DESIGN: A COMPLETE DESIGN. TO TAKE PLACE OF CYLINDER, SUCTION METAL, TO PREVENT LEAKING OF TRADITIONAL TYPE AND INCREASE DURABILITY.
5. LONG LIFE LEAKLESS PUMP: MADE OF HIGH DURA. BILITY FCD 45 CASTING DUCTILE.

### Specification for Power Tiller - HTP Sprayer

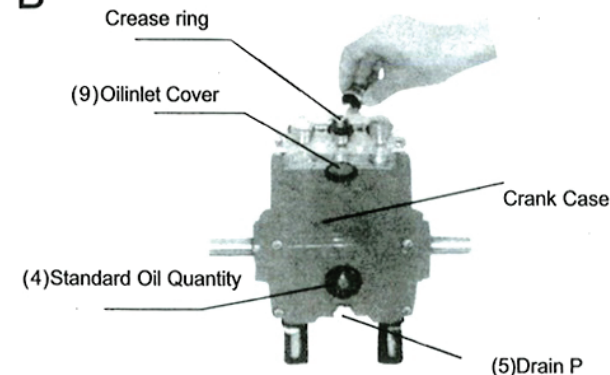
Specification		HTP Sprayer
Engine Models		Manam Kubota
Engine RPM		2400
Engine Power	(Kw / HP)	8.80 / 12.0
SPRAYER		
Piston Nos x Dia x Stroke	(mm)	3 x 22 x 16
Piston length	(mm)	129
Pressure	(Kgcm)	20 -35
Suction pipe length	(Mts)	15 .0
Sprayer RPM		800 - 1000
Discharge	( l/mints)	36
Weight of Sprayer	(Kgs)	7.5
Chemical Tank Capacity	(lits)	30-100
Oil capacity for sprayer	(lits) /MI	0.6 /600
Lubricant oil		SAE 20w40

# POWER SPRAYER

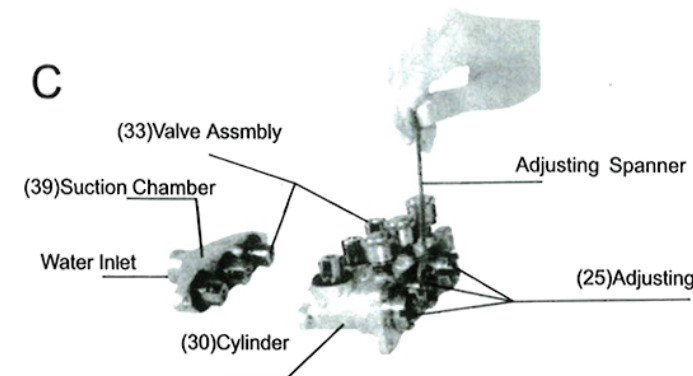
A



B



C



#### A. Operation Instruction

1. Check every fastener and make sure that the sprayer and
2. Set the two pulleys in a straight line, and the belt in an appropriate tightness.
3. Every joint of the hoses must be tightened to prevent from leaking.
4. Before starting the motor, shut off the (43) Cock (Valve). Loose the (56) pressure Adjusting Screw and the (59) Pressure Adjuster to the top.
5. Start the motor to power the sprayer, keep a proper revolution. Press the (59) Pressure Adjusting to the bottom. keep the pressure around 21-35Kgs. by adjusting the (56) Pressure Adjusting Screw.
6. Open the (43) Cock (Valve) to start spraying.
7. After the spraying is over, pull the (59) Pressure Adjuster to the top and operate the sprayer with fresh water to clean out the remaining chemicals.

#### B. Pump Lubrication

1. Replace the engine oil after the sprayer has been used for the first 10 hours, 50 hours, and then every 70 hours.
2. Drain away the dirty engine oil by unscrewing the (5) Drain Plug.
3. After the (5) Drain plug is screwed on, remove the (9) oil Inlet Cover and refill #30-40 fresh engine oil.
4. Keep the oil level at 2/3 of the (4) oil Glass.
5. Always fill the (31) Grease Cups with grease. Screw on the Grease Cups 2-3 cycles every 2 hours of spraying.

#### C. Trouble Shooting

##### a. Feeding Failure & Pressure Instability.

1. Check whether the (54) Suction Hose is leaking or is stuck.
2. Open the (43) Cock (valve) to release the surplus air.
3. Remove the (39) suction Chamber and the (41.44 AB) Water Outlet Chamber. Check if the (33) Valve Assembly are stuck or damaged.

##### b. Pressure Insufficiency

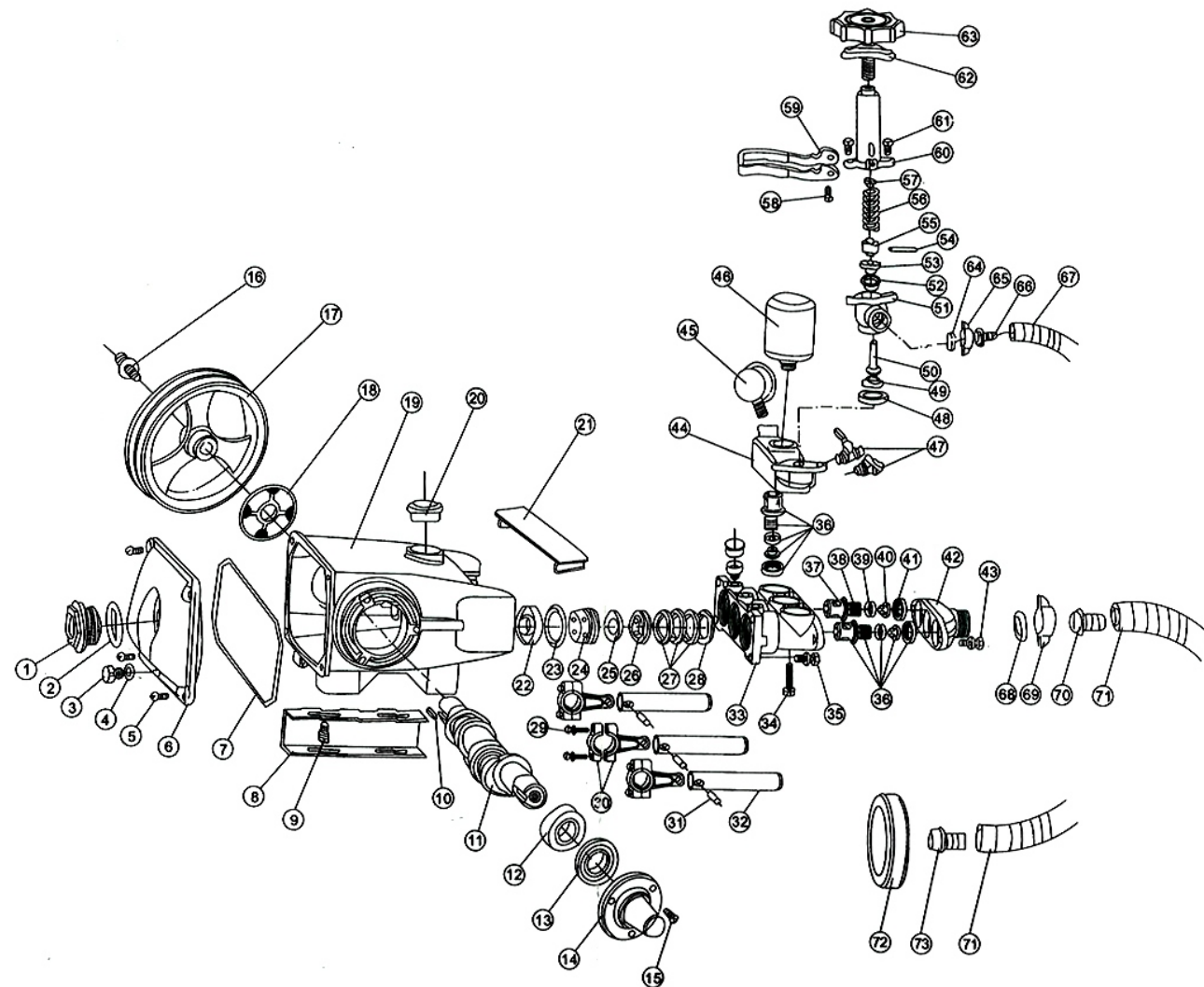
1. Check whether the pressure has been adjusted properly.
2. Check whether the belt is too loose.
3. Check whether the Spray Hose and the couplings are broken and damaged.

##### c. Cylinder Leakage

1. Remove the (8) Dustproof Cover and wind up the (25) Adjusting Rings.
2. If still in vain, replace the (28) V-packings in the (30) Cylinder.

Remark: ( ) indicates the "part number" of relative ect. The products seek perfect and renew constantly. If the instruction doesn't tally the Products, please forgive as.

# DIAGRAM OF THE POWER SPRAYER



## PARTS · LIST

Ret No	Parts Name	Ret No	Parts Name	Ret No	Parts Name
1	Oil Gauge	26	Grease ring	51	Body Over Flow
2	Oil Seal	27	V Packing	52	Safeguard shade
3	Plug Drain	28	V Packing Seat	53	Oil Seal
4	O-Ring	29	Bolt washer, spring	54	Pin
5	Screw	30	Connecting Rod	55	Shift the dirt scroll box
6	Cover, crank case	31	Plunger Pin	56	Spring
7	O-Ring ,crank case	32	Plunger	57	Upper Metal
8	Bed, washer, spring	33	Cylinder	58.	Screw
9	Bolt, washer, spring	34	Bolt washer, spring	59	Knob, control
10	Key	35	Bolt washer, spring	60	Spring Box
11	Crank Shaft	36	Valve Ass'y	61	Bolt, washer, spring
12	Bearing	37	Valve Seal	62	Fly Nut
13	Oil Seal, crank shaft	38	Valve seal	63	Screw
14	Cover, Oil seal	39	Valve Flat	64	Packing
15	Bolt	40	Valve Spring	65	Coupling
16	Bolt	41	Valve Box	66	Core, Coupling
17	Pulley	42	Suction Metal	67	P.V.C. Hose
18	Cover, Oil seal	43	Bolt washer, spring	68	Packing
19	Crank Case	44	Discharge Metal	69	Coupling
20	Plug	45	Pressure Gauge	70	Core, Coupling
21	Punger Cover	46	Air Chamber	71	P.V.C. Hose
22	Oil Seal, plunger	47	Cock	72	Strainer Ass'y
23	Stopping Ring, water	48	O-Ring	73	Cote, Strainer
24	Grand	49	Valve Seat		
25	Grease seal	50	Spindle		